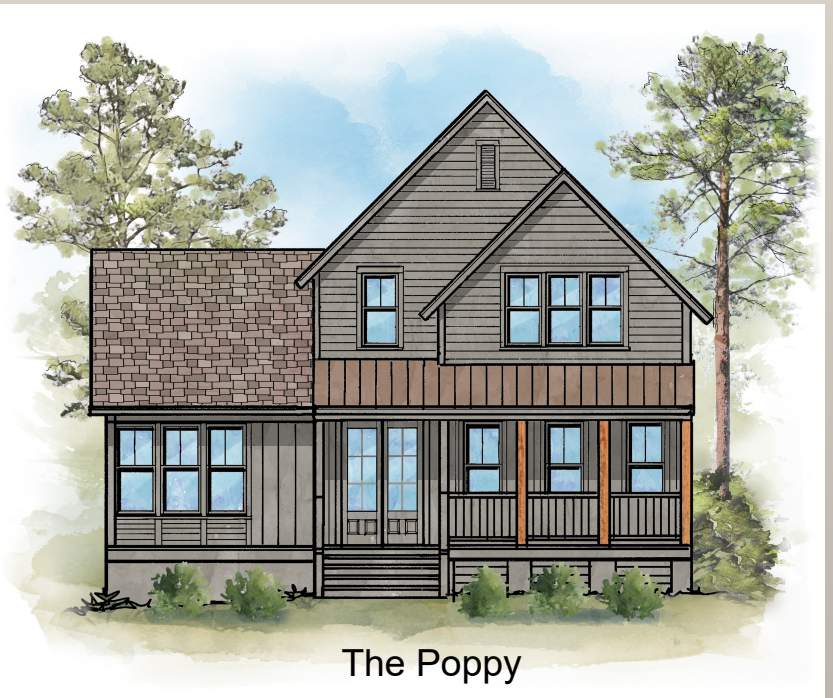


THE POPPY PLAN

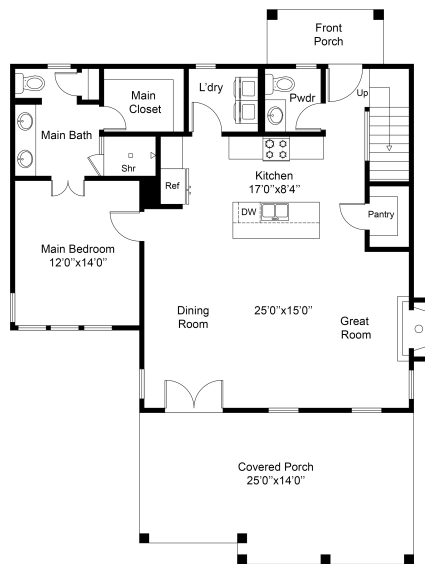
3 BEDROOMS. 2.5 BATHROOMS

1698 SF

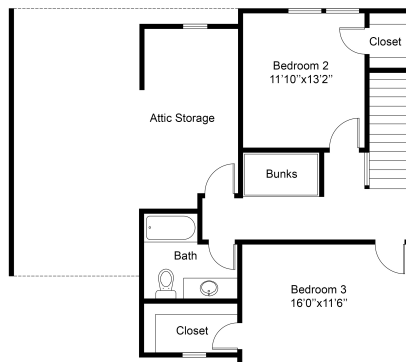
This plan is light and bright with large windows in the open kitchen and great room. Primary bedroom is on the main floor. Ample storage and extra built in bunks will sleep all the guests with comfort.



The Poppy



FIRST FLOOR PLAN



SECOND FLOOR PLAN

This floor plan including furniture, fixture measurements and dimensions are approximate and for illustrative purposes only. BoxBrownie.com gives no guarantee, warranty or representation as to the accuracy and layout. All enquiries must be directed to the agent, vendor or party representing this floor plan.

1234 Main Street
Anytown, State ZIP
7-10pm

us at: Artu
ementum est,
e perle portitor
pacing, aliquet
enperdiet arcu per
quillam.